

Engineered Solutions. Trusted Results.



HANDLE SETS

Signature® 40.94

The 40.94 Signature series handle sets offers a contour shape which is both elegant and easy to grasp. Compatible with single or multi-point mortise locks, this series of handle sets have been engineered to fit stile thicknesses ranging from 1.25" to 2.25". Extended bosses on both the inside and outside escutcheons enhance handle stability for more secure operation.

The 40.94 Signature series handle set is designed to accent today's larger patio doors. This non-handed design features escutcheons that are 13 inches long by 1.25 inches wide and a locking point located above the handle to provide easy access to the thumb-turn or optional key cylinder.

Handle options include:

- Keyed
- Non-keyed
- Dummy

Product Highlights

- Both OX and XO handles
- Interior escutcheon with thumb-turn mounted
- Exterior escutcheon with full-length gasket
- Handle (4) mounting screws with hex wrench
- Interior escutcheon with thumb-turn mounted
- Exterior escutcheon with full-length gasket
- KD SCH-C style 5-pin Key cylinder with 2 keys (KA available separately)

Available Colors

Blacks

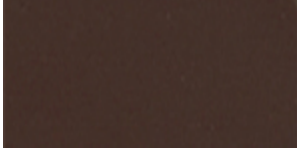


Black



Matte Black

Browns



Faux Bronze

Nickels



Satin Nickel PVD

Tans



Beige