

Engineered Solutions. Trusted Results.

HANDLE SETS

800 Series Regency



The classic style 800 Series handle is a stylish choice for your hinged door. Standard versions of the handle fit panel thicknesses of 1.55" to 1.85" and custom configurations are also available depending on your application needs. These handles are attached to the escutcheons in our factory for easy installation in the field.

Offering a diverse portfolio of hinged door trim set hardware giving you a choice of style and performance.

product highlights

- Recommended for: aluminum, composite, vinyl, and wood
- Spindle = 8mm
- Spacing = 92mm
- Standard 5-pin key cylinder
- Classic aesthetics
- Non-handed design
- 92mm spacing between handle and thumb-turn
- Handles are attached to escutcheons in the factory
- Thumb-turn above and below options
- Painted and plated finishes available
- Available in both brass and zinc substrates
- Visually verify that lock is engaged with 90-degree thumb-turn rotation
- With a Schlage C-keyway cylinder, homeowners can key all doors alike
- Active, Passive, Inactive and Dummy sets available
- PVD Finishes have a lifetime warranty

Available Colors

Brasses



Brass PVD

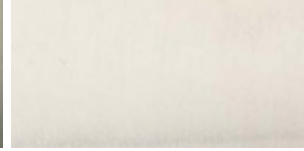


Solid Brass PVD

Nickels



Satin Nickel

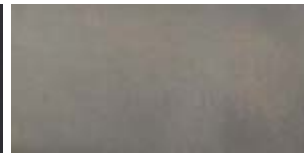


Satin Nickel PVD

Oil Rubbed Bronzes



Dark Oil Rubbed Bronze



Oil Rubbed Bronze PVD

Tans



Vision Tan

Whites



Wet White