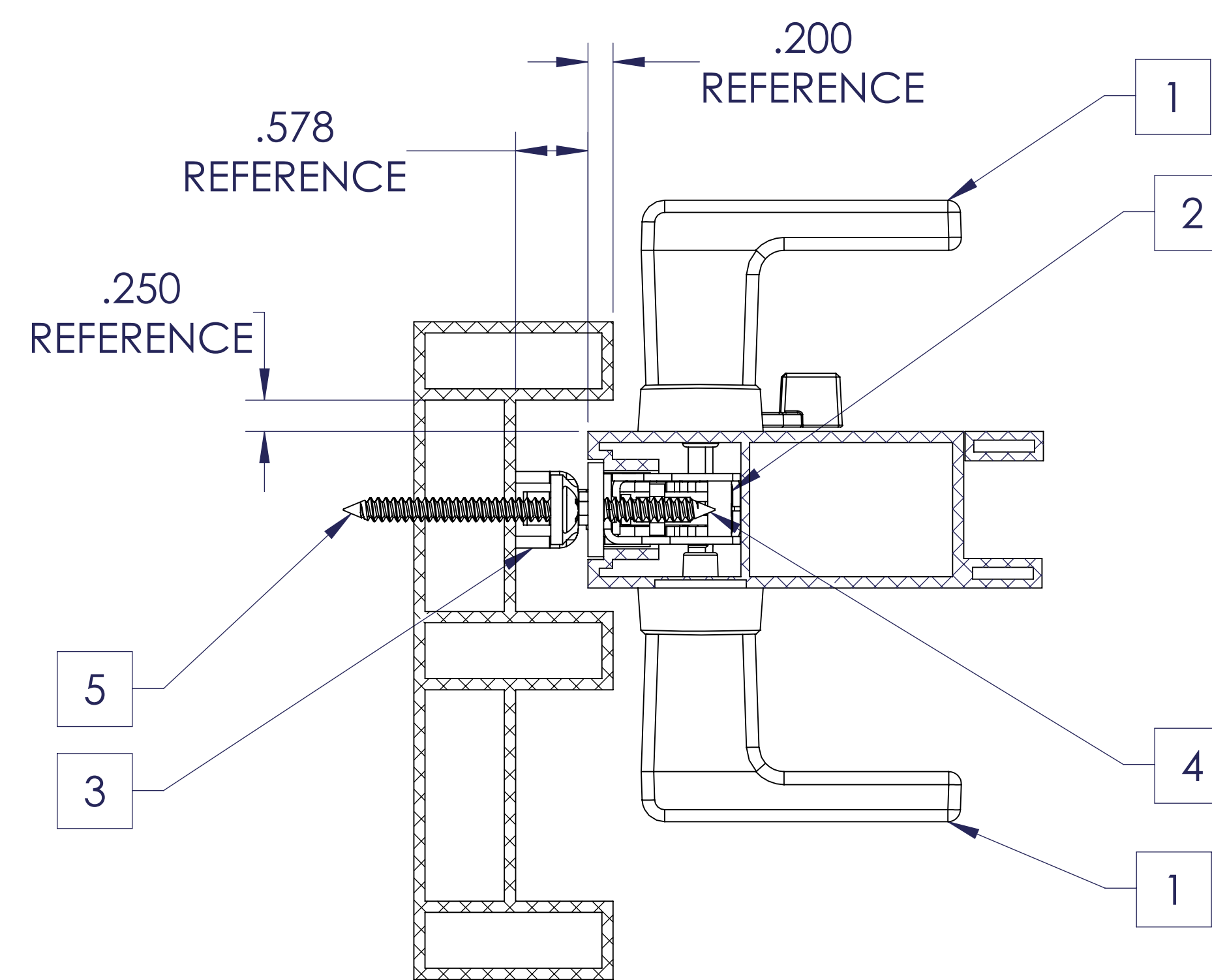
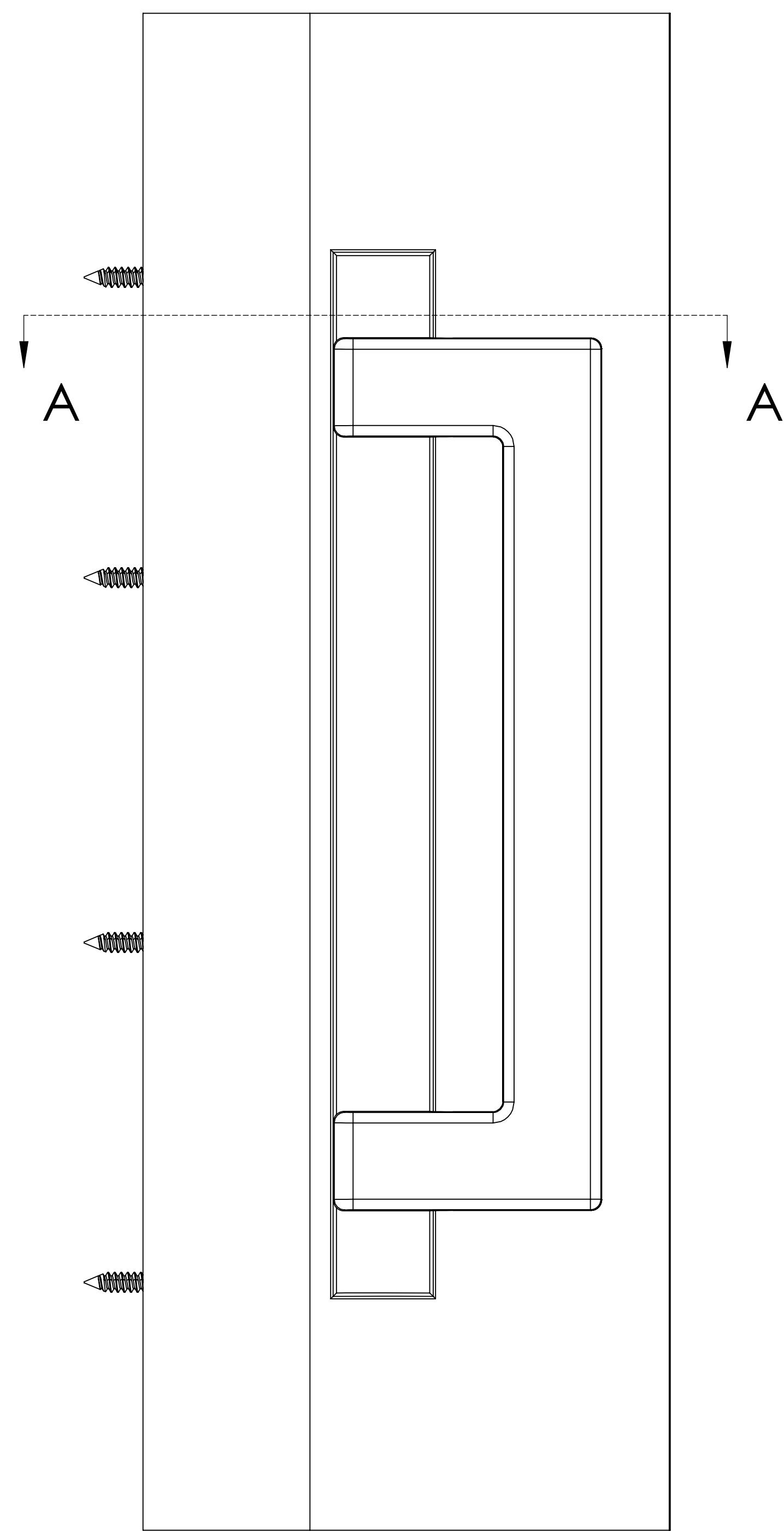
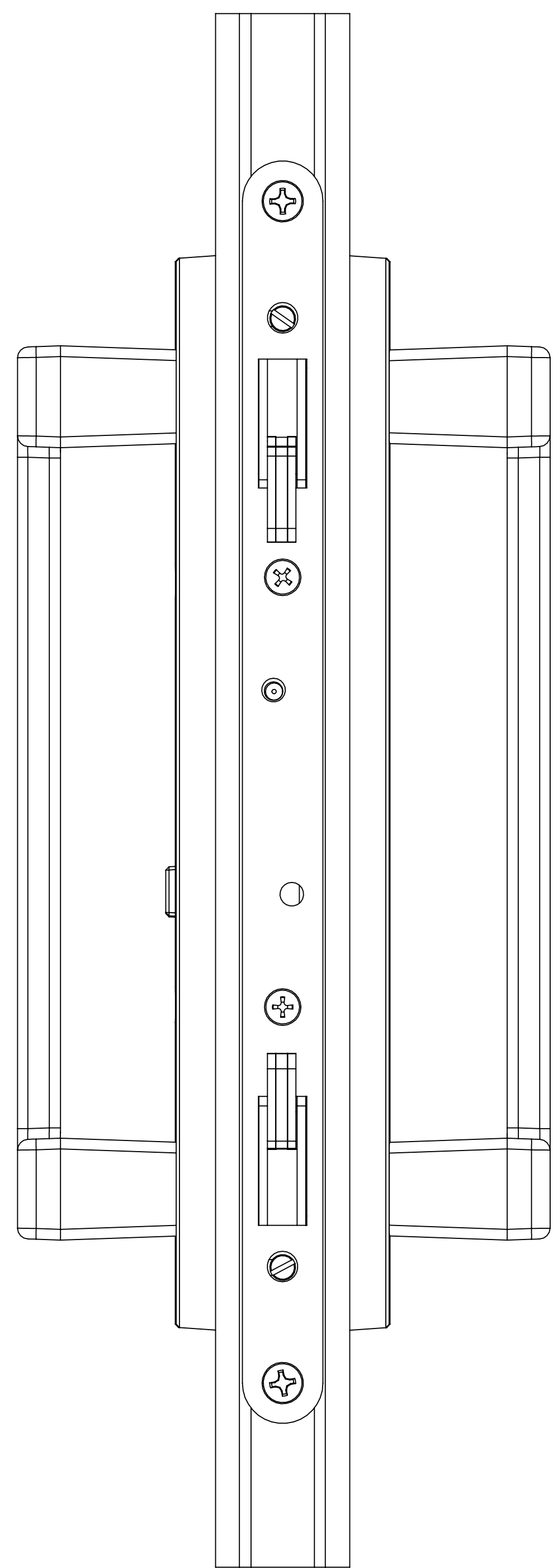


LOCK ROUTE

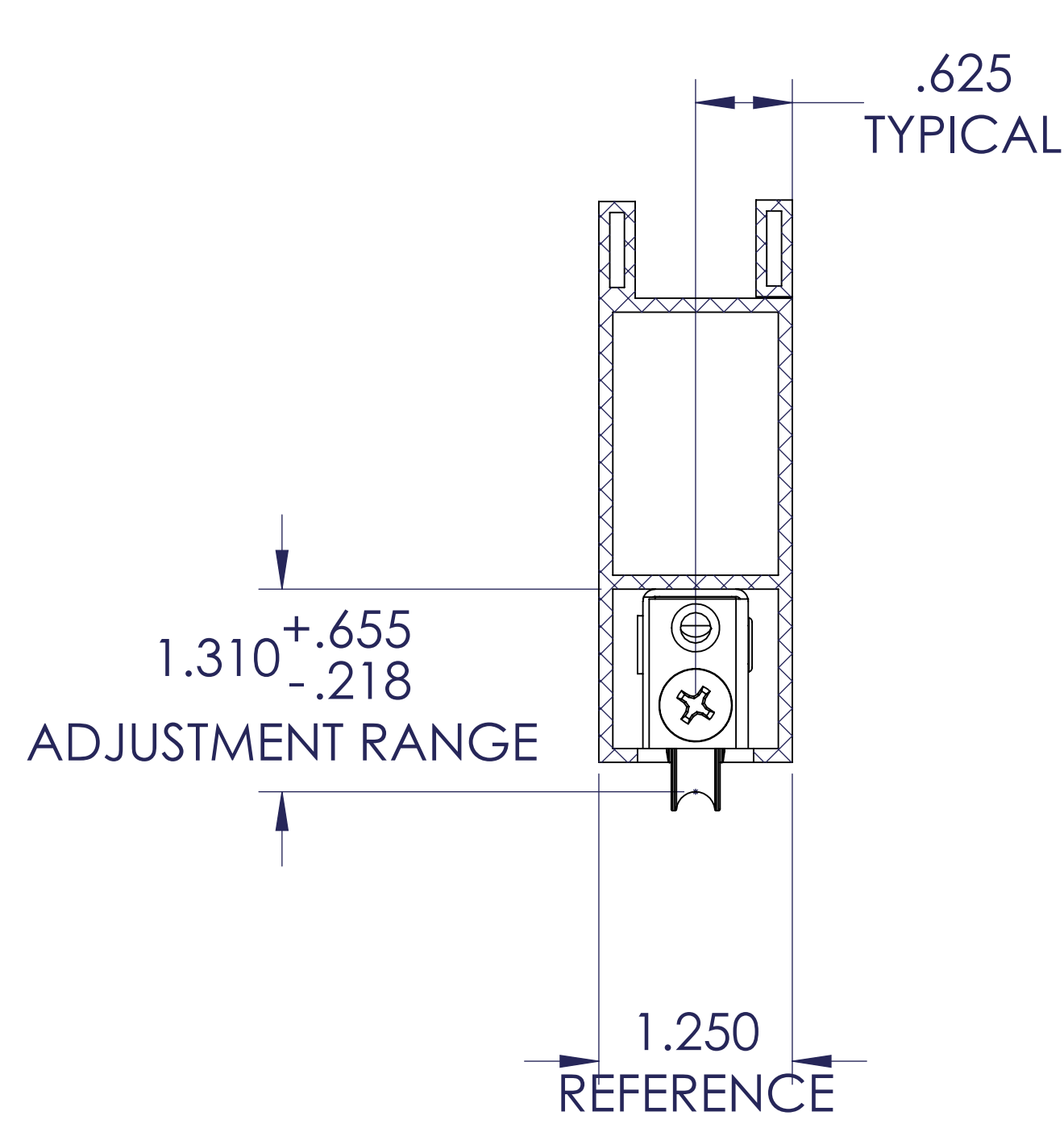
HANDLE LOCATION AND HOLE PATTERNS



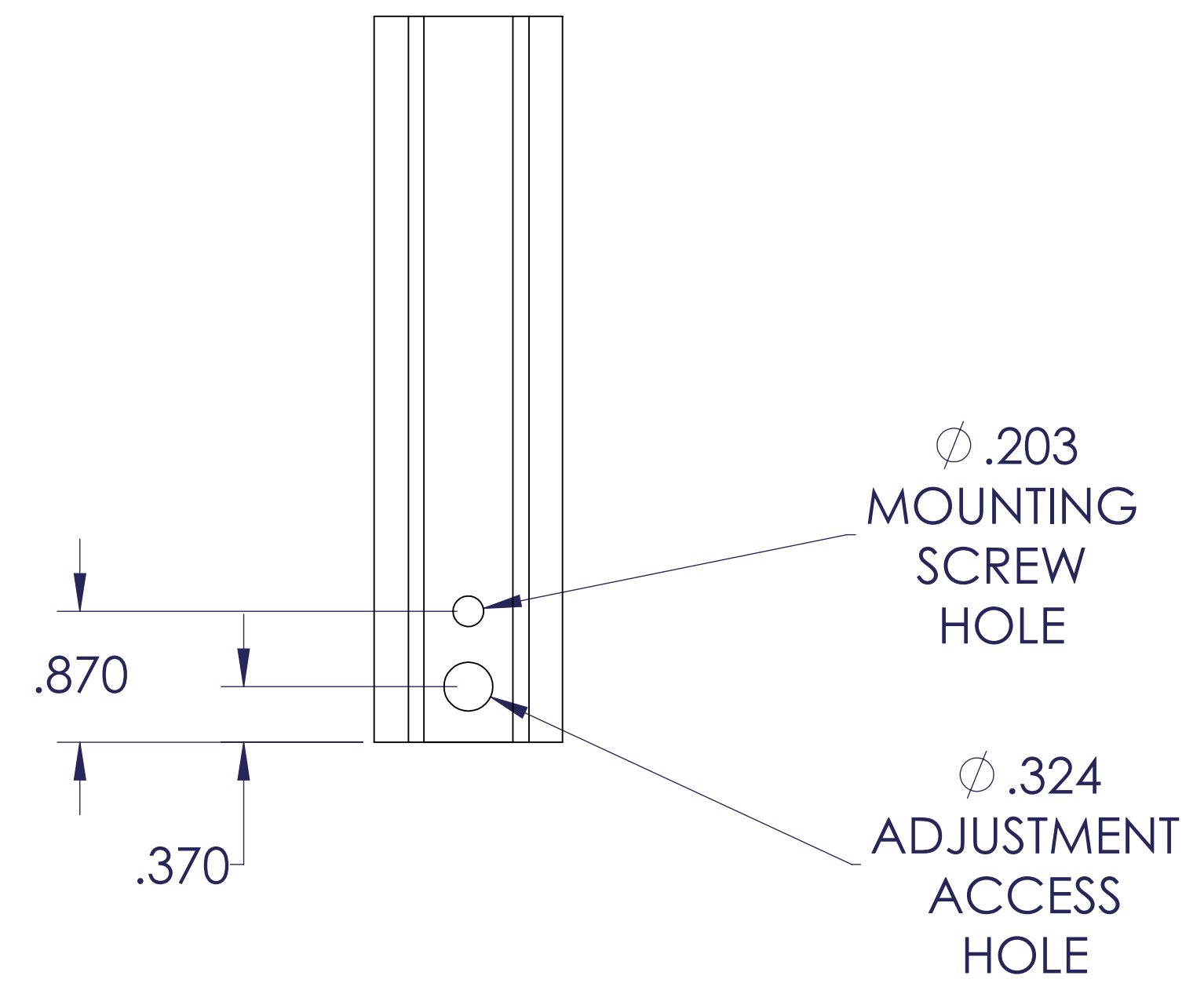
SECTION A-A  
SCALE 1 : 1

ITEM NO.	PART NUMBER	DESCRIPTION	QTY.
1	40.69.XX.100	40.69.XX.100	1
2	2817 locked	Amesbury 2pt lock 2817	1
3	2447	2447 keeper	1
4	19380	SCREW, 10 X 1 PH FH SMS YZP	2
5	19247	SCREW, 10 X 1-3/4 PH FH SMS	4

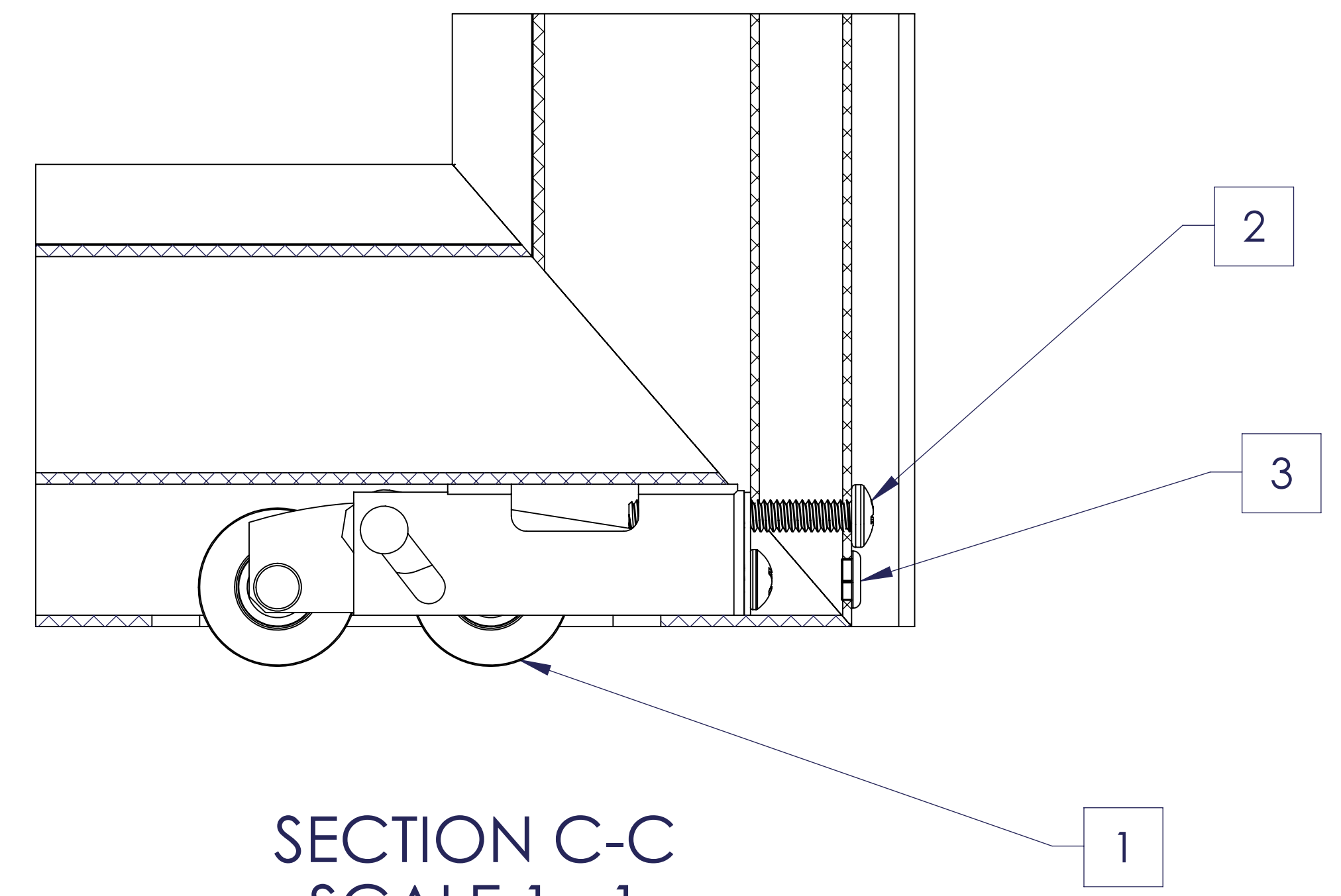
FOR MORE INFORMATION ON 2PT LOCKING AND HANDLES AVAILABLE SEE ONLINE CATALOG



SECTION D-D  
SCALE 1 : 1

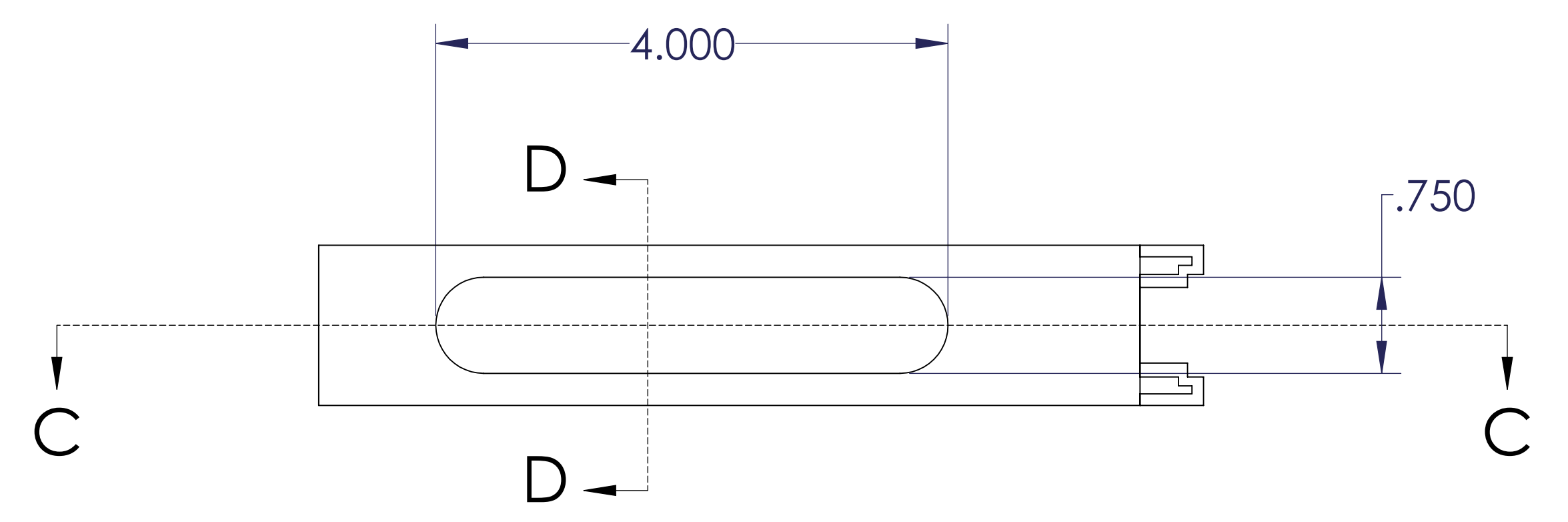


SECTION C-C  
SCALE 1 : 1



ITEM NO.	PART NUMBER	DESCRIPTION	QTY.
1	1951-4968-2	TA-51-BS-125-U-680-C2	1
2	91772A548	SCREW 1/4-20 X 1-3/4 PH PH SST 18-8	1
3	88000	PLUG, 5/16 SNOW WHITE	1

NOTE:  
 1. RATED FOR MAX. WEIGHT OF 350LBS PER PAIR OF ROLLER ASSEMBLIES.  
 2. FOR MORE ROLLER INFORMATION SEE AMESBURYTRUTH CATALOG.



MATERIAL:		 <b>Amesbury Truth</b> Engineered Solutions. Trusted Results.	INTERPRET PER: ASME Y14.0M-2009	DRAWING TITLE: GENERIC ROLLER APPLICATION	
FINISH:	UNITS: INCH		TOLERANCES UNLESS OTHERWISE SPECIFIED:	2 PL ± .015	3 PL ± .010
HEAT TREAT:	WEIGHT: LBS	THE INFORMATION CONTAINED IN THIS DRAWING IS CONFIDENTIAL AND PROPRIETARY. THIS DRAWING IS NOT TO BE COPIED OR REPRODUCED IN WHOLE OR IN PART WITHOUT EXPRESS WRITTEN PERMISSION.	THIRD ANGLE PROJECTION	CAD TYPE: SOLIDWORKS	DRAWN: M. NEFF ENG: SIZE: SCALE: 1:2 SHEET 2 OF 2
SURFACE AREA: IN <sup>2</sup>			○ CRITICAL DIMENSIONS	DRAWING # <b>21285E</b>	REV